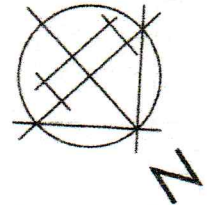
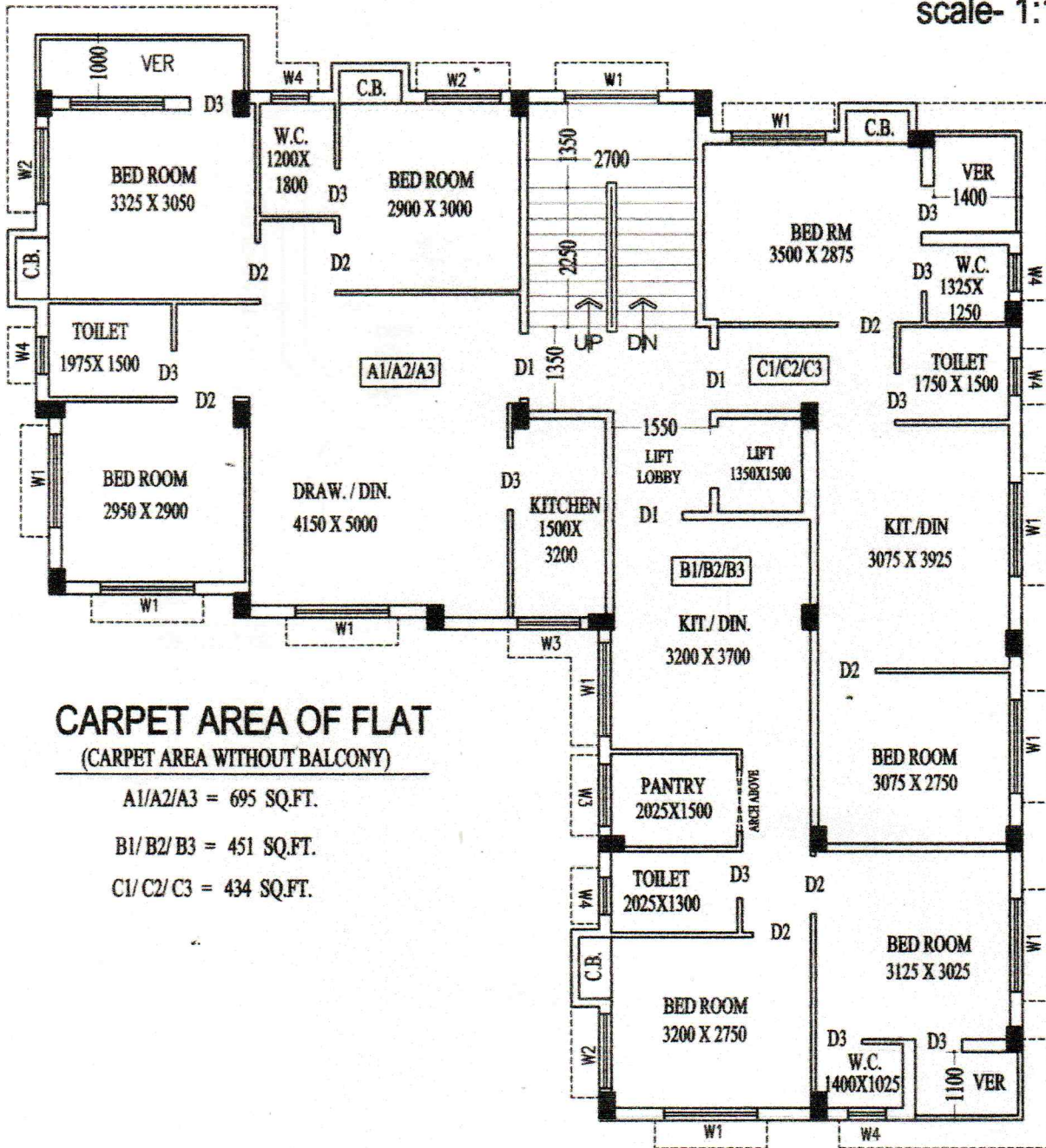


**PROPOSED G+III STORIED RESIDENTIAL BUILDING PLAN
OF HEIGHT 12.500 MT. U/S 393A OF K.M.C. ACT 1980 UNDER
BUILDING RULE 2009 AT PREMISES NO. 38 KAMDAHARI PURBA
PARA, WARD NO.- 111, BOROUGH- XI, P.S.- BANSDRONI
KOLKATA -700084.**

UNDER THE KOLKATA MUNICIPAL CORPORATION.



scale- 1:100



CARPET AREA OF FLAT
(CARPET AREA WITHOUT BALCONY)

- A1/A2/A3 = 695 SQ.FT.
- B1/ B2/ B3 = 451 SQ.FT.
- C1/ C2/ C3 = 434 SQ.FT.

H
Hiranmoy Mukherjee
L.B.S. No. 1350(I)
The Kolkata Municipal Corporation

TYPICAL FLOOR PLAN
(1ST, 2ND & 3RD FLOOR)

SIGNATURE OF L.B.S. / ENGINEER